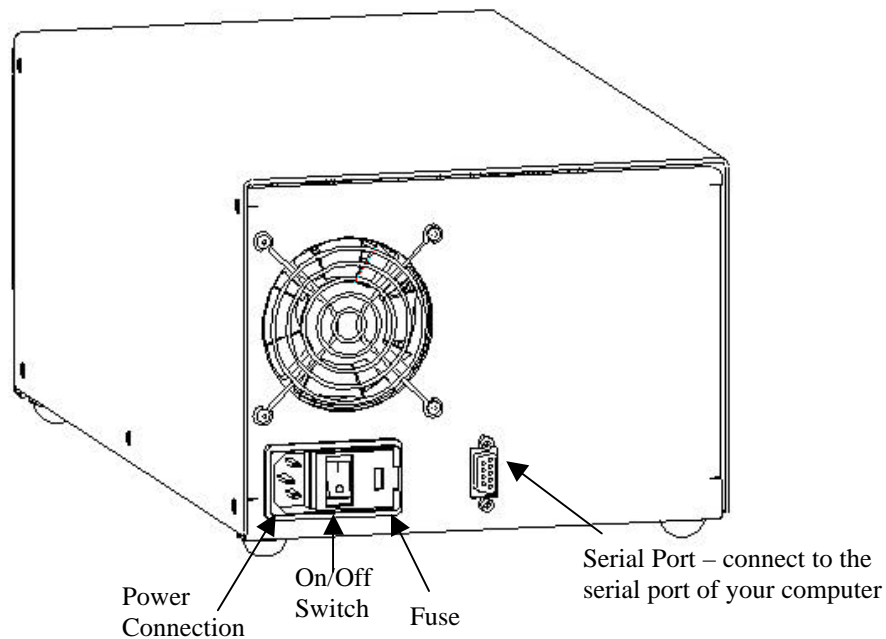
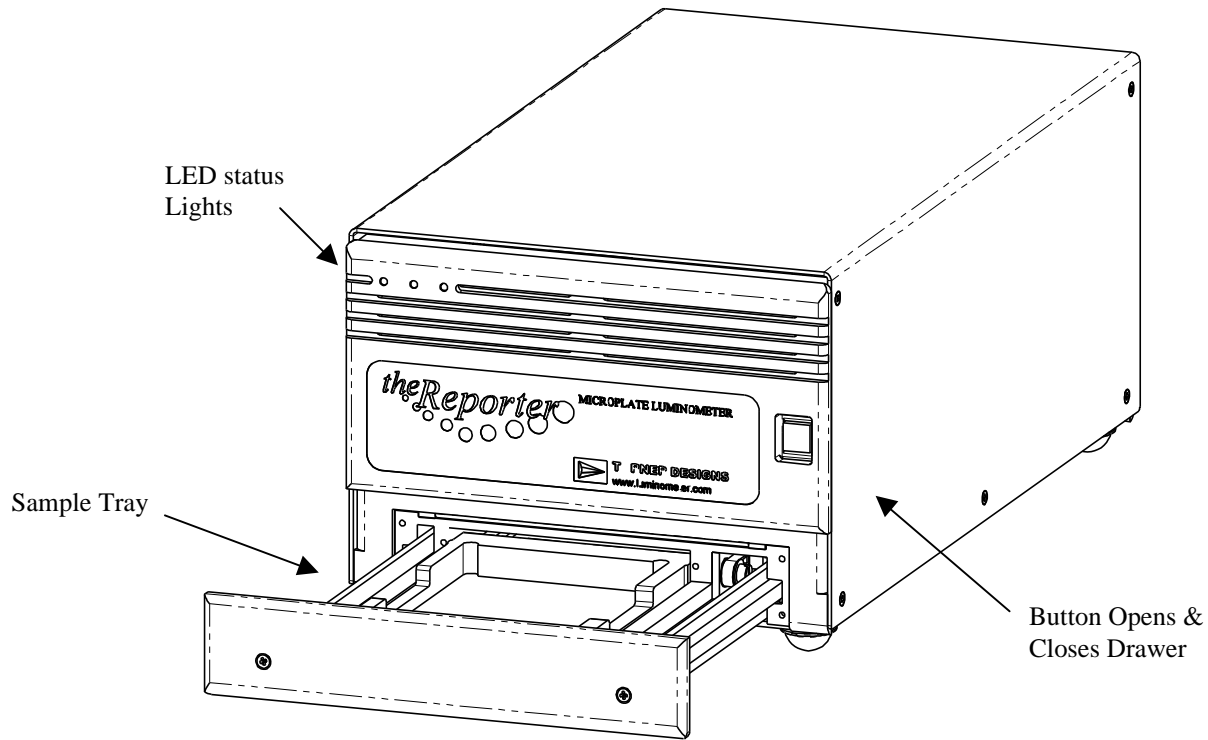


The Reporter™ Microplate Luminometer Quick View Diagram

(See reverse for Quick Start Instructions)



TURNER BIOSYSTEMS, Inc.
845 W. Maude Avenue · Sunnyvale, CA 94085
408.749.0994 · Fax 408.749.0998
www.turnerbiosystems.com · Toll Free 877.316.8049

P/N 998-9610 Rev. C

The Reporter™ Microplate Luminometer Quick Start Instructions

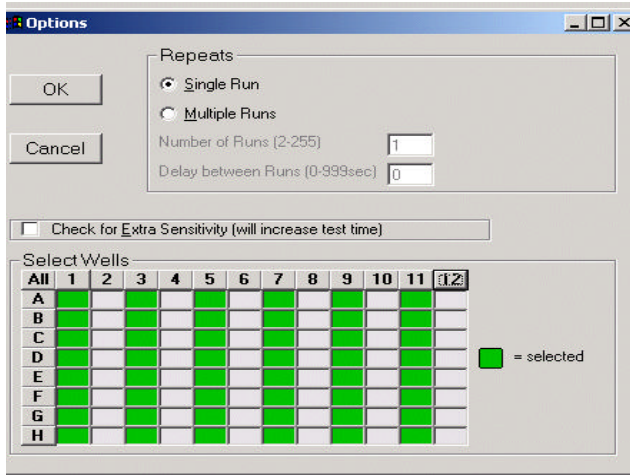
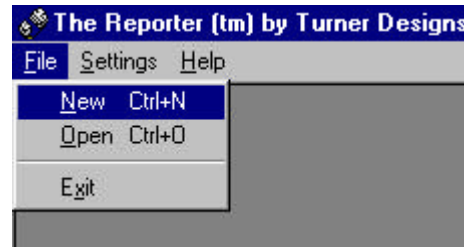
1. CONNECTIONS (see reverse for connection locations)

- ❖ Install the power cord for the Reporter™ Microplate Luminometer.
- ❖ Install the AC adapter for the computer.
- ❖ Connect the 9 pin serial cable between the Reporter™ Microplate Luminometer and the computer.
- ❖ Turn on both the Reporter™ Microplate Luminometer and the computer.
- ❖ Press the tray button on the front of the Reporter™ Microplate Luminometer. This will open the tray to allow you to place a sample in the instrument. Place your plate in the tray. Press the tray button again to close the tray.



2. STARTING THE SOFTWARE

- ❖ Double click on the Reporter icon to start the software.
- ❖ In the upper left hand corner, click on **File**, then **New**.

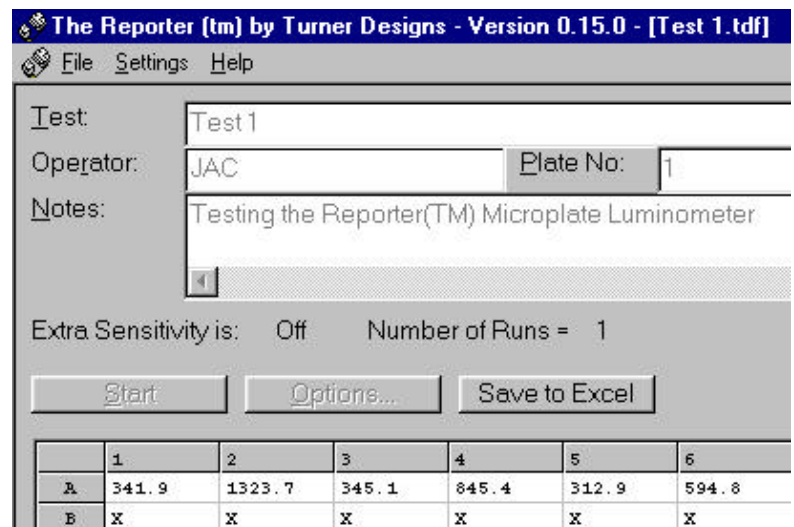


3. SETTING THE OPTIONS

- ❖ Click on the **Options** button to open the options screen
- ❖ Select the Wells for the Reporter™ Microplate Luminometer to measure. Clicking on All will toggle all wells. Clicking on a column number toggles all wells in the column. Clicking on a row letter toggles all wells in the row. Clicking on an individual well will toggle that well.
- ❖ Once finished, click **OK**.

4. STARTING A RUN

- ❖ Enter any information you wish to record in the Test, Operator, Plate, and Notes fields.
- ❖ Click the **Start** button.
- ❖ Enter a file name and click on **Save**.
- ❖ The run should start. Once completed, the data will be transferred to the PC for display.



TURNER BIOSYSTEMS, Inc.
 845 W. Maude Avenue • Sunnyvale, CA 94085
 408.749.0994 • Fax 408.749.0998
 www.turnerbiosystems.com • Toll Free 877.316.8049